



## About Natureworks Pty Ltd

[www.natureworks.com.au](http://www.natureworks.com.au)

Natureworks is arguably **Australia's leading nature-based** design and construct theming company with over **25 years' experience designing and building many of Australia's best** known and loved tourist attractions and venues. Natureworks blends creativity with technical expertise to assist our clients in developing exhibits that are realistic, innovative, educational and above all, entertaining. These capabilities allow us to transform your vision into an experience that visitors want to repeat. Our goal is to tell your story and build your dreams. We resolve the aesthetic and technical challenges unique to each project, and view value engineering as an ongoing design assignment.

### Natureworks Plans, Designs, Fabricates and Constructs

- Educational & entertaining family attractions
- Mini Golf
- Natural wildlife reproductions
- Fantasy sculptures & themescapes
- **"Larger than Life" installations**
- Amazing environments of rock, water & vegetation (synthetic & real)
- Aboriginal cultural & interpretive centres
- Retail, Hospitality and Commercial Builds, Fitouts and Renovations
- Mural art

Natureworks Creative Director, David Joffe, commenced his career as a Preparator at the Queensland Museum before establishing his own business applying museum techniques commercially. David is considered one of the leading consultants and pioneers of the themed entertainment industry in Australia.

The Natureworks team includes industrial, interior, and graphic designers, model makers, mural artists, sculptors, naturalists, project managers, construction managers, fabricators and an array of specialist consultants called upon when the need arises.

## COMPANY PROFILE

Over the last 40 years Natureworks has specialised in life-sized, highly detailed wildlife, prehistoric and themed sculpture replicas, producing what is now the largest collection of natural-history art in the world.

We are renowned for our museum quality animals and prehistoric art and out-of-this-world elements of natural beauty for customers wanting to add extraordinary atmosphere to their home or business base.

We have produced a vast range of iconic sculptures that can be seen throughout Australia such as the face of Luna Park, and Matilda the Kangaroo, as well as hundreds of specialty features for zoos, theme parks, councils, clubs, casinos, shopping centres, museums, interpretive and cultural centres, mini golf courses and public aquariums.

## PRODUCTS AND SERVICES

**Natureworks'** produces a diverse range of products which include artificial replicas of **animal's, trees and rocks, and** playground sculptures. It also includes diorama art, zoo habitats, dinosaur and prehistoric exhibits, aquarium componentry, larger-than-life constructions and themed miniature golf courses. Natureworks is also the distributor for the Universal Rock range of prefabricated lightweight rock features.

## COMPOSITION AND MANUFACTURE

Customers can choose from various sculptural media including fibreglass, Glass fibre-reinforced cement (GFRC), hard-coated polyurethane foam and hot cast bronze, aluminium and cast iron. Sculptures can be adapted and designed to conform to the Australian playground standard. All sculptures are finished with true to life characteristics and colours or custom painted as required.

## DESIGN AND CONSTRUCT

Natureworks provides Creative Design solutions & quality construction outcomes that exceeds our Clients expectations.

Through our creative design, tight project management, and quality construction we produce projects that:

- Excite, entertain, and educate people of all ages.
- Increases business turnover in competitive markets.
- Meets our client's budgets and time frames and fulfill all legislative requirements.

Our Team can provide a complete design and construct service for the private sector in hospitality, retail and commercial industries and the government sector in interpretive centers, zoos, museums, and specialized projects. This service involves a multitude of staff with complementary skills, trades and professions that work under one roof and includes artists, industrial designers, electricians, carpenters, metalworkers, concreters, shopfitters interior designers and engineers. This business model is essential for Natureworks to deliver a result that is on time and to budget.

## FACILITIES

Our premises are located at Highvale in the Samford valley in Brisbane, which includes our offices and several workshops and storage complex, for the stocking, production and manufacture of our specialty items

## CLIENTS AND CONTRACTS

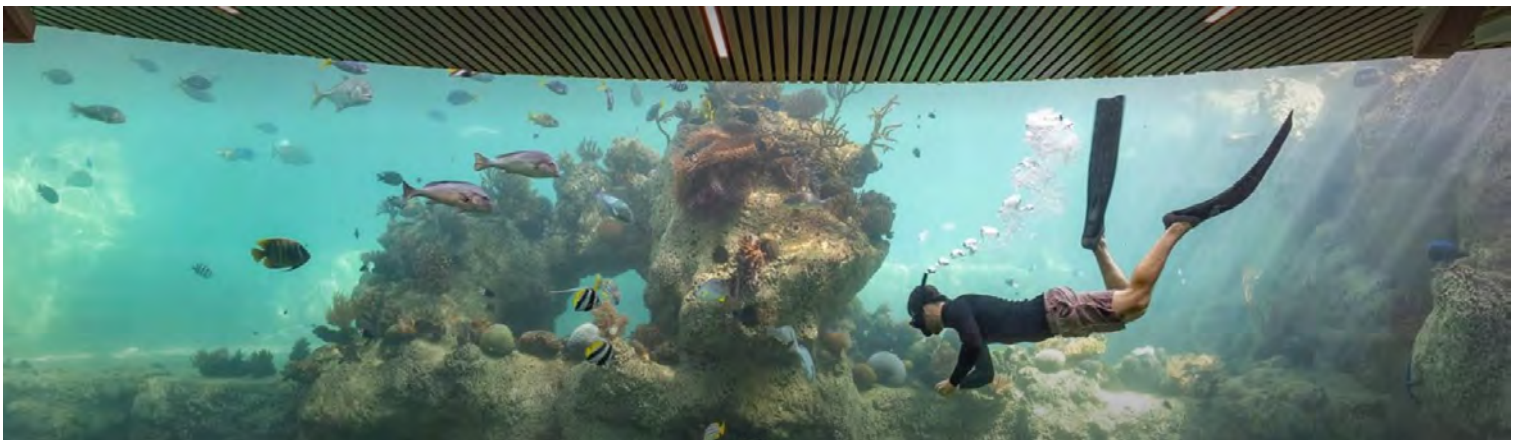
- Undersea Putt and Play – 18 Hole themed putt-putt course -Bluewater Square Shopping Centre Brisbane.
- Putt in the Park – 18 Hole mini Golf - Iplay, Coomera Westfield Shopping Centre
- Sea World - Shark Bay artificial reef and rockwork to the entire aquarium visitor experience
- Sea World - Polar Bear Shores - Rockwork to the entire enclosure visitor experience.
- Sea World – Dolphin stadium and penguin exhibit rockwork to the entire visitor experience.
- Movie World - Wild, Wild West Ride – Artificial rock mountain and rockwork throughout the entire ride.
- Movie World - Aragon's Lair – Artificial rockwork to the entire visitor experience
- Movie World - Fit-out of 10000 sq meters of rock landscape and scenic fit-out of Looney Tunes ride & Einstein's House.
- Dreamworld, Gold Coast - Assorted rock and water-scape systems in Tiger Island exhibit and throughout the park that included limestone caves, waterfall structure, lion's den cave, all fabricated in synthetic rock. FRP log boat fabrication. Created animated dragon and dinosaurs for dark ride. Provision and installation of a wide range of human and animal figures for scenes in various dark rides.
- Kuala Lumpur International Airport – Main Waterfall Feature in Central Atrium.
- Rockhampton - Dreamtime Cultural Centre
- Canterbury Bankstown Sports Club – All theming elements throughout Club
- Shanghai Ocean Aquarium – Entire fit out of all aquatic scenery and theming Décor throughout
- Hunter Valley Gardens' - Fairy Tale Sculpture Garden
- Luna Park's Face & Tumble Bug
- Taronga Zoo's – Entire Serpenteria Exhibit fit out and assorted rockwork throughout park.
- Tree of Life in Seoul, South Korea
- Sculptural elements of Yeppoon's aquatic and splash pool and foreshore Giant octopus tentacles and sea-life creatures (the Kraken) Yeppoon City Council
- Interactive tree, Ipswich Environmental Education Centre
- Childcare centres Australia Wide
- National Botanical Gardens – 15 plus Megafauna sculpture, Giant thorny devil sculpture and many more. Client continues to build their collection.
- Giant Wombat, Thallon, QLD
- Reptile Cave, Gumbuya World Victoria
- Riversleigh Visitors Centre, Mt Isa – Megafauna sculptures and scenery displays, current contracts and ongoing long-term relationship.
- Daydream Island – Artificial rock and reef to the largest manmade living coral reef lagoon in the world. Around Australia in 19 Holf Mini Golf
- Australian Reptile Park – Multiple theming elements, animal sculptures and rockwork throughout park.
- Radisson Plaza Hotel, Cairns – Designed and fabricated 15-metre-high artificial Rainforest display in lobby of the Radisson Hotel to the Pier in Cairns. The display featured a spectacular 15-metre artificial Strangler Fig tree as its most prominent element. Also featured were over 80 native rainforest animals, a nine-metre synthetic rock waterfall, aboriginal cave, huge painted wall rainforest murals and biological stream and pond system stocked with native fish & aquatic life.

- Brisbane Forest Park, Brisbane - Created Walkabout Creek and Life in a Freshwater Pond habitats in synthetic rock including streams, caves, and aquarium exhibits.
- Dreamtime Cultural Centre, Rockhampton- Sandstone cave depicting Aboriginal rock art, Museum special effects exhibit design and fabrication. Design of multi-use theatre to resemble Carnarvon Gorge rock feature utilizing illusions and special effects.
- Underwater World, Mooloolaba - Underwater environments including reefs, caves and ledges in synthetic rock for largest walk-through aquarium in Australia.
- N.Z. Pavilion Expo '88, Brisbane - Limestone caves, rock cliffs and waterfalls adjacent to Pacific Lagoon. Produced themed fit-out of NZ restaurant at Expo.
- Qld Pavilion Expo '88, Brisbane - Indoor artificial rainforest dioramas, beach scene and video talking heads of the pub scene in Queensland Pavilion dark ride.
- Royal Pines Golf Resort, Gold Coast - Synthetic rock lagoon edgings and boulders for reflecting pond.
- Festival Faire, Cairns - Water feature and rainforest landscape as fitout for the beer garden, Power Brewing.
- Pacific Bay Beach & Golf Resort, Coif's Harbor - Synthetic rock lagoon edgings and watercourse cascades for over 4 acres of man-made water features.
- Currumbin Bird Sanctuary, Gold Coast - Artificial rainforest foyer display as main entrance to sanctuary. Created waterfall, cascades, and stream in synthetic rock as main feature in giant rainforest aviary.
- Club Tropical Resort, Port Douglas, Qld. - Design, provision and installation of tropical landscaping of site, main swimming pool, synthetic rock pools and spas and streams. Themed cave restaurant in synthetic rock.
- Noel Carroll Enterprises, Dandenong, Vic. - Created enormous drive-through waterfall, cave and extensive retaining, rock wall in synthetic rock.

.....Plus many, many more

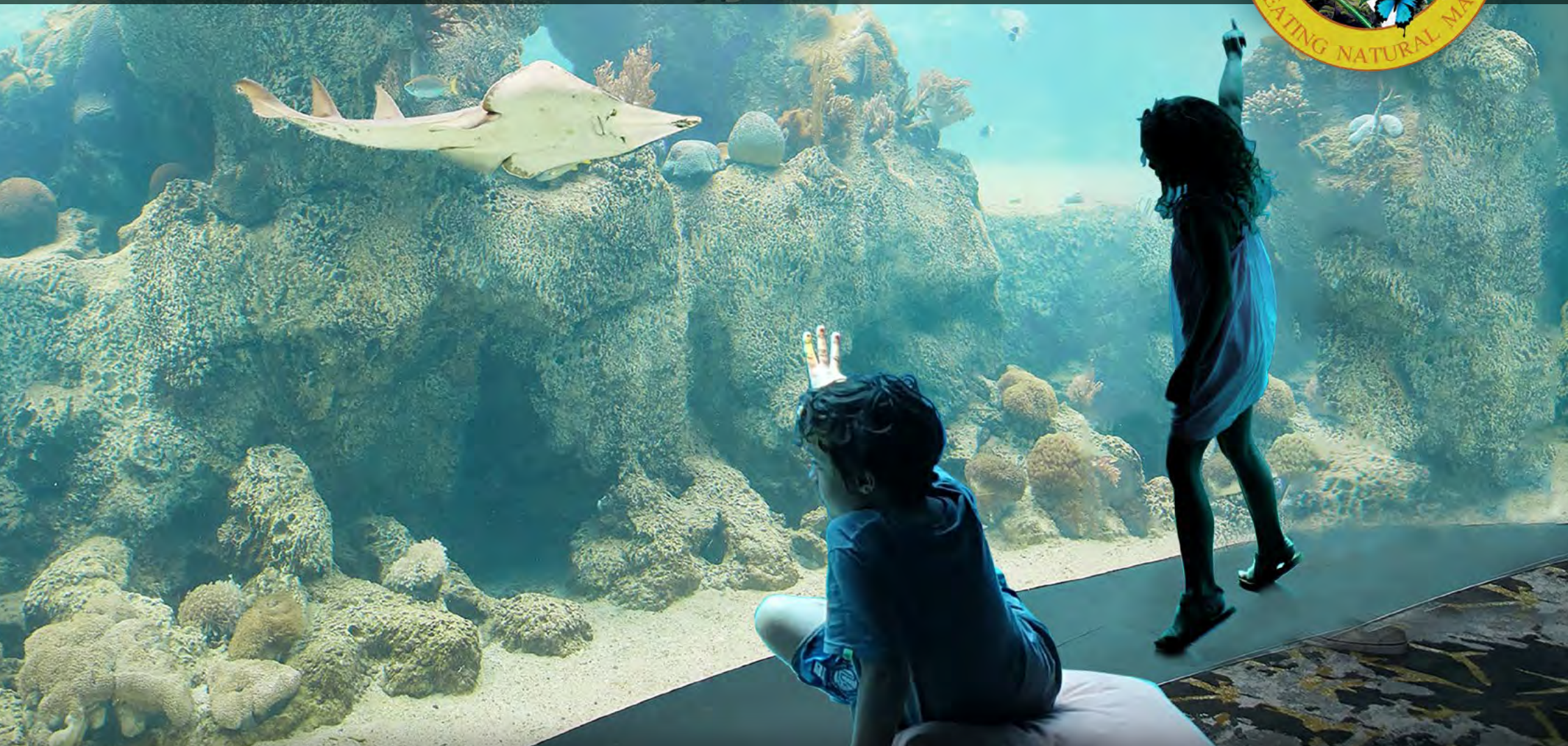
#### SERVICABLE AREAS

Australia-wide and internationally



# CREATING NATURAL MAGIC

NATUREWORKS CREATES INSPIRATIONAL EXPERIENCES BASED ON THE ART OF NATURE



# WELCOME TO NATUREWORKS

LET US CREATE MAGIC FOR YOU!

## CONTENTS

A world of natural magic	3
Our passion for nature	4
40+ weird, wonderful years...	6
Bringing your ideas to life	8
Natureworks in action	10
Our unique collection	18
Discover more!	20

## CONTACT US

**Address** 732 Mt Glorious Rd, Highvale  
QLD 4520, Australia  
*(please call before visiting)*

**Email** [info@natureworks.com.au](mailto:info@natureworks.com.au)

**Telephone** +61 (0)7 3289 7555

**Website** [natureworks.com.au](http://natureworks.com.au)



# A WORLD OF NATURAL MAGIC

ORIGINAL HIGH QUALITY SCULPTURES THAT CAPTURE NATURE IN ALL ITS WONDER

Natureworks plans, designs, sculpts and builds lifelike, museum quality sculptures of nature's wonders, from animals, rocks and trees through to themed props, fantasy characters, incredible larger than life 'big things' and realistic natural habitats.

Our original sculptures, props and murals enhance playgrounds, wildlife parks, cultural centres, shops, hotels, mini-golf courses, childcare facilities, theme parks, tourist attractions and homes and gardens.

## Natureworks can help you to:

- Create a themed experience for your shop, cafe, hotel, leisure park, business or event
- Promote your town, school, club or other organisation via unique props and signage
- Build creative play spaces that encourage a love of nature and the outdoors
- Bring the beauty of nature into your home, interior space, workplace or garden
- Attract, inform, educate or amuse people!

# OUR PASSION FOR NATURE

A LOVE FOR NATURAL HISTORY BACKED BY DEEP KNOWLEDGE AND UNBRIDLED CREATIVITY

## Our background and purpose

Founded in 1979 by experienced museum preparator David Joffe, Natureworks promotes a passion for nature while helping our customers achieve their goals. We are known for our highly realistic sculptures based on the natural world.

However, we also love creating imaginary creatures, iconic big things and props for educational and commercial themes.

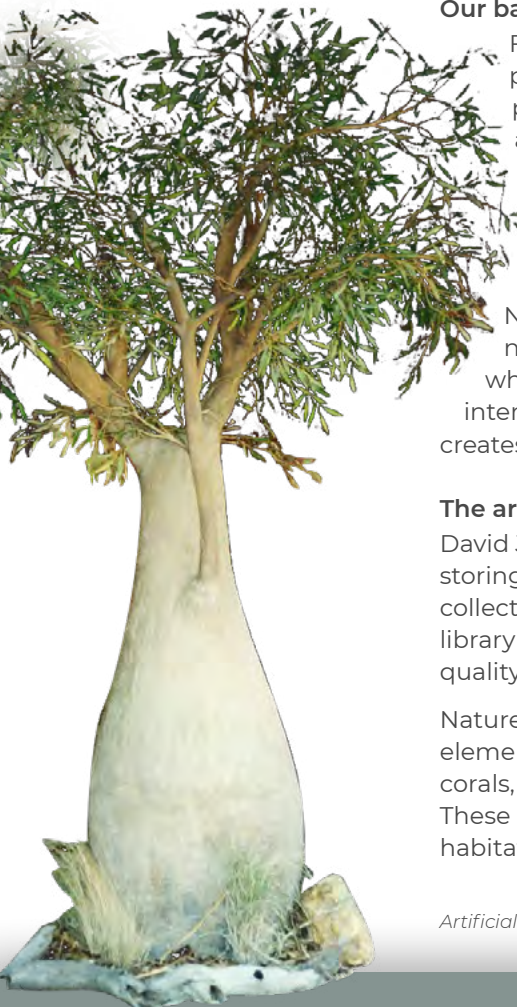
Natureworks mixes knowledge of built and natural environments with exceptional artists who have a passion for natural history and interpretive art. It's this unique combination that creates natural magic!

## The art of the natural world

David Joffe has dedicated his life to creating and storing moulds of natural forms, building an extensive collection of animal, bird and marine life castings. This library of resources gives us ready access to museum-quality copies of just about anything in nature.

Natureworks' original sculptures of environmental elements include trees, roots, rocks, ponds, fungi, corals, termite mounds, water lilies, crystals and fossils. These are perfect for recreating beautiful natural habitats and environments – inside or outdoors.

Artificial Bottle Tree



## 40 years experience in the theming industry

Over the years, we have been inundated with the strangest of requests, and have amassed an unparalleled collection of natural history sculptures and oddities. Combined with the knowledge and expertise of director David Joffe and his team, this collection of ready-made resources means Natureworks can create engaging experiences for client projects efficiently and cost-effectively.

We have designed an incredible range of original sculptures and environments for zoos, aviaries, cultural centres, theme parks, gardens, shopping malls, aquaria, water play parks, mini-golf courses and other businesses around the world.

## Turning kids on to nature's magic

As the world's pristine habitats dwindle, demand for nature-based products increases. To encourage future generations to engage with nature, we produce a range of child-friendly animal art, climb-on play equipment and nature-themed furniture. See our website for play items such as animal seats, cubby houses, slides, fossil digs, climbing logs, friendly frogs and many more exciting items.

Giant Size Green & Golden Bell Frog



David Joffe,  
Natureworks  
founder

Life Size  
Panda  
(Sitting,  
Eating)





Who...  
unlocks  
nature's  
hidden  
secrets..?



## WHO UNLOCKS NATURE'S SECRETS?

We do! Our highly skilled artisans have been creating museum-quality natural replicas for many years. Before sculpting an animal, plant or rock, we engage in thorough research to ensure all details are accurate. We can work from your photographs to create customised replicas, or collaborate with you to plan and design complete nature-based environments.

## WHAT CAN WE SCULPT? ANYTHING!

- Life size sculptures of birds, mammals, marine life, reptiles and other animals
- Replicas of extinct animals such as dinosaurs, megafauna, fossil skeletons
- Artificial trees and plants to bring a sense of nature into interior or exterior spaces
- Artificial rocks, walls, caves and corals
- Fantasy creatures such as dragons, mermaids and storybook characters
- Larger than life animals, plants and objects
- Nature-themed structures and props for mini-golf courses and playgrounds
- A wide variety of themed props, from giant apples to pirate chests and zebra seats!

# 40+ WEIRD, WONDERFUL YEARS...

Natureworks has designed, created and built an incredible array of projects over the years. Here is a small collection of them – see our website for more!



Natureworks was founded by David Joffe in 1979. David's artistic skills, natural history knowledge and museum display experience gave the company a unique ability to produce realistic, unusual art inspired by nature.



A giant Egyptian crocodile god? Why not! We made it for the Australian Reptile Park in NSW.



This replica giant strangler fig graced the lobby of **Radisson Hotel** in Cairns, QLD



We created realistic limestone caves and rainforests for **Expo 88** in Brisbane.



**Gondwana Rainforest Sanctuary** at Brisbane South Bank highlighted the role of rainforests in our survival. Wildlife habitats and educational displays focused on conservation.



**Wild Island** at Currumbin Wildlife Sanctuary has a bold entry statement and an adventure playground with climbing nets and crawl through burrows for children to explore.

1980

We sculpted a 2m high **magpie** for Souths Rugby League Club in Brisbane. It has since flown north to a sporting complex in Gladstone!



Originally created for Coffs Harbour Zoo, these beautiful **giant koalas** are now at Billabong Zoo in Port Macquarie.



In the 1980s, Carindale Shopping centre was home to **Crocodile Creek mini-golf** course. It took 3 months for Natureworks to build, complete with live fish, giant croc and trees. 40 years on, we're still creating mini-golf courses!



Marine environments and coral reefs bring nature to life at **Underwater World** Mooloolaba QLD.



1990

We designed and built a colourful giant bug for the **Tumblebug** ride in Luna Park, Sydney.



The entrance to **Luna Park** in Sydney had a complete facelift in the mid 1990's thanks to Natureworks.



Our **giant dugong** in Rockhampton housed an indoor theatre and cultural interpretative centre for Torres Strait Islander artefacts.



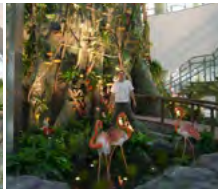
Giant bas relief, caves and interpretive displays enhance the world heritage site at **Riversleigh**, QLD.



A VISUAL TIMELINE OF NATUREWORKS PROJECTS (SEE OUR WEBSITE FOR MANY MORE!)



At the Sea World theme park (Gold Coast QLD), Natureworks constructed **Shark Bay** (artificial corals, reefs, rocks), **World of the Sea Theatre** (artificial corals) and **Polar Bear Shores** (habitat for polar bears with artificial rocks, caves and water features).



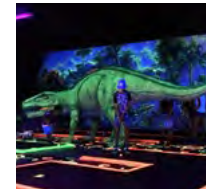
Natureworks' gigantic **Tree of Life** rises through 6 levels of a shopping mall in Seoul, South Korea.



We sculpted a new version of Matilda the kangaroo – a mascot for Matilda Group.



Watch out! We put a **giant redback spider** on the toilet for customers of Redback Landscape Supply company!



Big and little kids love this dinosaur themed glow-in-the-dark **mini golf course!**



An artificial **coral reef lagoon** allows safe diving experiences at Daydream Island.



Our fun-filled water **sprayground** at Yeppoon has a local marine theme.

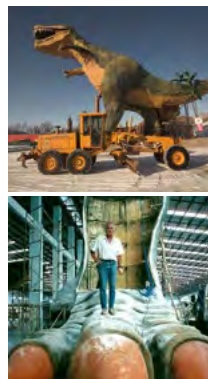
2010

2020

**Shanghai Ocean Aquarium** has magical underwater walkways and marine habitats.



**The largest dinosaur in the world** (40m long) was built in pieces then shipped to Canada for display.



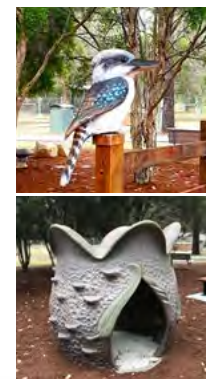
Well-loved storybook characters delight young visitors exploring **The Storybook Gardens** at Hunter Valley Gardens, Pokolbin NSW.



Our replica **Black Hawk** helicopter was built for paintball fields but can also be customised for promotional use.



Jimboomba's Rotary Park **playground** has giant native animals and a delightful seed pod cubby house.



**Undersea Putt & Play** mini-golf course at Redcliffe QLD includes glow-in-the-dark sea creatures, marine animals and an amazing pirate ship facade with nautical murals.



# BRINGING YOUR IDEAS TO LIFE

OUR CREATIVE DESIGN PROCESS AND CONSULTING SERVICES – THE ONLY LIMIT IS YOUR IMAGINATION!



## The briefing

First, we listen to your needs and identify your objectives. Your goals and vision, together with other project requirements, helps us establish exactly what is involved in developing and creating a project proposal.

Our many years of experience gives us an in-depth understanding of what works and what doesn't, so we'll often throw in ideas at this early stage, to help ensure the success of your project.



## Initial design concepts

Next, we generate a number of creative solutions and designs, using concept drawings to initiate conversations about your requirements for the project. This helps clarify the brief and iron out any ambiguities, saving time and ensuring a more positive outcome.

The conceptualising process is a valuable specialist skill which usually has a cost associated due to the time/skill involved.



## Detailed design and prototyping

To show design details and exact specifications, we create technical drawings using specialist software like Sketchup, AutoCAD, Adobe Suite and 3D modelling. This stage will often include prototyping the concept as a scale model, to refine design details before items are constructed.



## Sculpting and fabrication

Once the design is finalised, we fabricate it and create a steel substructure if needed.

We also carry out major site construction work with artificial rockwork or other constructions that require substructure fabrication and fibreglass moulding.



## Finishing

Our skilled artisans add finishing touches like painting detailed features, adding a 2pac finish for better weather protection and installing mounts or hooks. Once the work is finished, we can deliver and install it if required.



# OUR TEAM AT WORK

SKILLED ARTISANS, FABRICATORS, INSTALLERS AND CREATIVE GENIUSES!



# NATUREWORKS IN ACTION

WE GET RESULTS FOR OUR CLIENTS ACROSS AN INCREDIBLE RANGE OF PROJECTS!

Natureworks has helped countless clients achieve their goals over the years, and continues to do so.

Our projects attract attention and create a real point of difference, which is especially important in tougher economic times. We also help clients to create new businesses, for example by providing complete mini-golf kits, themed props, 3D signs, and shop, hotel or restaurant fitouts.

Whether your aim is to promote, educate, entertain or inspire, we will support you in achieving that goal. We'll add ideas, expertise and a generous sprinkle of natural magic!



## Childcare centres, schools and public playgrounds

- ✓ Attract families & visitors
- ✓ Transform a space into something exciting!
- ✓ Encourage curiosity and appreciation of nature
- ✓ Provide safe play spaces
- ✓ Climbable structures can be certified
- ✓ Cater for different ages, abilities and needs



## House and garden decor

- ✓ Add interest to your garden or property
- ✓ Create replica natural settings inside or out
- ✓ Enjoy nature themed furniture and sculptures
- ✓ Add quirky items (like a zebra seat or giant gnome) to amuse family and friends!



## Water play areas and spraygrounds

- ✓ Bring new life into a town or open space
- ✓ Attract young families
- ✓ Support memorable, fun-filled experiences
- ✓ Enable safe, creative outdoor play
- ✓ Build a robust play area to stand the test of time



## Theme parks and holiday resorts

- ✓ Add creative themed displays to enhance the visitor experience
- ✓ Provide habitats for animals and marine life
- ✓ Create memorable first impressions via entry statements and murals
- ✓ Give older facilities a facelift or new look



## Township icons and tourist attractions

- ✓ Attract visitors with iconic sculptures
- ✓ Make a big impression with Big Things
- ✓ Create themed experiences (fantasy, historic, storybook, etc)
- ✓ Provide photo opps for social media
- ✓ Boost business

# FROM AQUARIUMS TO ZOOS...

...BUSINESS, CULTURE, EDUCATION, ENTERTAINMENT, EVENTS, PLAY, RETAIL, TOURISM AND MUCH MORE...



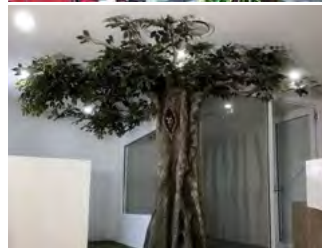
## Aquariums and marine parks

- ✓ Support inspirational visitor experiences
- ✓ Reproduce beautiful coral reefs, bommies and rock formations
- ✓ Provide safe diving and observation options
- ✓ Add aquatic themes to buildings and signage



## Mini-golf courses

- ✓ Draw in the crowds with a mini-golf course
- ✓ Set up in exterior or interior spaces
- ✓ Provide a fun, themed experience
- ✓ Glow-in-the-dark option
- ✓ Most of our products can be adapted to suit mini-golf gameplay



## Retail, office and commercial fitouts

- ✓ Create a distinctive facade or interior for your office, shop, hotel, cafe or other business
- ✓ Use unusual props to attract customers
- ✓ Promote your brand
- ✓ Customise sculptures and fittings to suit your business



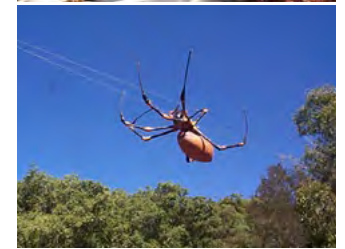
## Cultural, historic and environmental interpretation centres

- ✓ Attract visitors with highly realistic, well researched displays
- ✓ Protect valuable artefacts – use replicas
- ✓ Integrate educational features into exhibits
- ✓ Engage kids with hands on activities like fossil digs and discovery trails



## Themed events and displays

- ✓ Create a fully themed experience with props, murals and signs
- ✓ Popular themes include food, fantasy, pirates, Egypt, Christmas, weddings, dinosaurs and many more!
- ✓ Mix and match items to create your display



## Zoos, museums and wildlife centres

- ✓ Provide realistic natural habitats for animals
- ✓ Impress visitors with highly realistic models
- ✓ Boost conservation awareness of extinct or threatened animals
- ✓ Educate, inspire and entertain visitors



Luna Park Sydney Sydney, Australia 1993

PROJECT CASE STUDY



## WE GAVE SYDNEY'S MOST FAMOUS FACE A FACELIFT!

When Sydney's Luna Park wanted a facelift (literally), they called Natureworks to give their entrance sculpture a new lease of life. The original's deteriorating material had failed the test of time.

Natureworks' artisans faithfully reproduced the personality of the original Luna Park entry statement, using robust materials built to last a hundred years. Nearly 30 years on, the face is still beaming at visitors and showing no wrinkles!

Looking to promote your brand and attract visitors? We can design and create unique entry statements or sculptures to give any business a memorable first impression.



**Step 1.** Creating a scale model of the whole piece, for approval by the client before the next stage.



**Step 2.** Sculpting the over 8m high face in polystyrene. This was done vertically to match how it would be displayed.



**Step 3.** Creating a heavy duty fibreglass shell over the sculpture; removing the polystyrene and applying colour/texture.



**Step 4.** Shipping the new face on a barge across Sydney Harbour, as a publicity stunt to draw attention to the re-opening of the park after years of closure.



**Step 5.** Craning the sculpture into position and installing it on site in place of the old sculpture.



**Step 6.** Attaching the eyelashes, teeth, side pillars and other finishing touches.





## EXCITING MARINE-THEMED FAMILY ENTERTAINMENT

The Redcliffe Putt and Play mini-golf challenge takes young and old into an underwater world of creatures of the deep, pirates of the Caribbean and monster animals, mermaids, sunken treasure, terrifying sharks and many other creatures of the ocean depths. All this on dry land in the bustling centre of suburban Redcliffe in Brisbane!

The Undersea Putt & Play entertainment centre sits within Redcliffe's Bluewater Square shopping centre just a block from the sea, so a marine theme was perfect! As well as an 18 hole putt-putt course, the venue includes a games arcade, cafe and bar.

### Pirate ship facade, marine creatures, murals and nautical themed props

Natureworks planned, designed and built the complete mini golf course and surrounding facade, from initial concept through to constructing walls, painting murals, sculpting animals, creating a range of marine props and adding nautical themed touches to the bar and gaming area. When it was finished, our team had to test the putt putt course (and bar) thoroughly, of course!

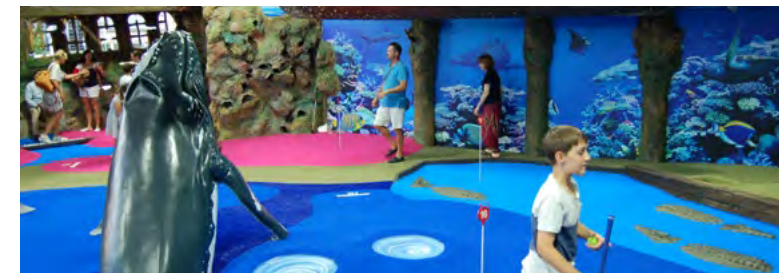
The outer facade of a pirate ship and aquatic features was designed to attract and intrigue visitors, and provides a recognisable landmark for the area. Since its launch in late 2020, Undersea Putt & Play continues to draw interest, attract tourist spending and entertain a variety of visitors.



Exterior pirate ship facade



Launching the centre



A view of the colourful course



 **Billabong Zoo Koala and Wildlife Park**  Port Macquarie, NSW, Australia  1980s

PROJECT CASE STUDY

## GIANT KOALAS AT THE ZOO

This family of giant koalas on a tree trunk was originally sculptured for the Coffs Harbour Zoo, but is now situated at Billabong Zoo Koala and Wildlife Park in Port Macquarie. It is 8 metres high!

These photographs show the koala sculpture being delivered and installed at the original site.

*To find more BIG animals like this, see our Big Things Catalogue, or get in touch!*





## VISUALLY STUNNING CORAL REEF EXPERIENCES

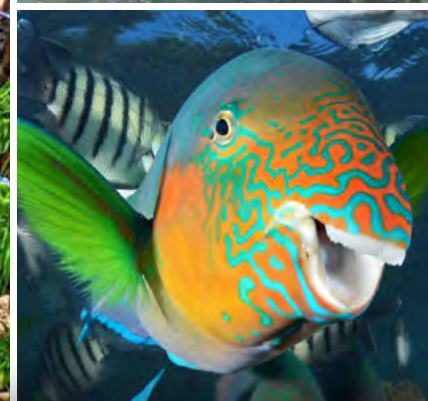
The Natureworks team was thrilled to have the opportunity to create highly realistic artificial coral bommie formations for the living reef and lagoon that wraps around the central resort building at Daydream Island.

Home to more than 100 species of aquatic creatures, the lagoon uses seawater directly drawn from the ocean, circulated, without treatment and discharged into the marine park without filtration.

The man-made lagoon feature creates a land-based extension to the Great Barrier Reef, offering a unique and safe snorkelling experience, underwater observatory reef education centre and underwater function facility.

As a reconstructed artificial reef with live corals and fish, the Daydream Island project provides a man-made coral reef experience similar to the Natureworks creation of Shark Bay at Sea World in 2002. This featured a major coral reef snorkelling and dive experience with over 10,000 castings of Natureworks synthetic elastomer corals and bommies built over a one-hectare lagoon complex.

Both of these man-made coral reef experiences are providing thousands of visitors with the unforgettable experience of diving on a coral reef without the inherent dangers.

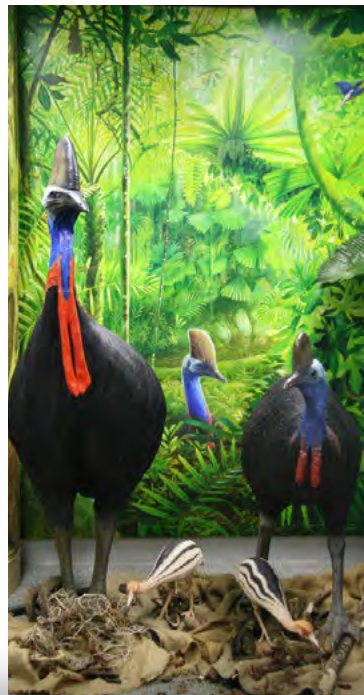




## BEAUTIFUL NATURAL HABITATS AND MURALS

Natureworks created accurate representations of four main habitats of the Ipswich local area – dry Sclerophyll, wet Sclerophyll, open woodland and creek environments – complete with wildlife common to these habitats.

Using museum techniques, the team combined artificial trees, rocks, foliage and highly realistic wildlife sculptures to recreate these habitats. Colourful murals and sound activated speakers completed the effect, merging 2D and 3D art for a truly memorable experience.





## FUN-FILLED WATER SPRAYGROUND WITH ABSTRACT SEA CREATURES

For this highly imaginative wet play space at Yeppoon, we branched out beyond our traditional realm of naturalistic realism and ventured into the world of abstract contemporary art.

Working closely with landscape architects Vee Design, Natureworks developed an abstract interpretation of Kraken tentacles (giant octopus), a stingray, a starfish, turtles and a giant crab. Using a range of finishes, we created larger-than-life artforms with precise mosaic patterns and a unique 3D bronze appliqué that hugs the free-flowing sculptural forms. The 3D micro-bronze patterned inlay tells the story of the sea creatures fringing the coral reef off Yeppoon.

A key challenge of the project was to produce large wet-play sculptural icons of local significance that would meet Australian Playground Standards. The brief called for a concrete substrate with no soft-fall, requiring the tall sculptures to be designed as unclimbable, but still inspirational and with great visual impact. Each sculpture was designed with a 75-year lifespan, reinforced to withstand strong weather conditions.

The hero piece of the installation is the 'Keppel Kraken'. At a height of 4m, this central sculpture towers over other elements, periodically dumping an avalanche of water on unsuspecting children below! An additional series of intermittent spray and jumping jets of water add more surprises and a ton of fun to this popular sprayground.



# OUR UNIQUE COLLECTION

A VAST LIBRARY OF ORIGINAL SCULPTURES AND PROPS READY TO ORDER OR CUSTOMISE

## Standard and original custom-designed products

Natureworks has an extensive collection of fibreglass sculptures and props, with well over 2000 items. Many of these are in stock, while others can be made from our existing moulds or adjusted for a custom project.

## Customise size, colour, pose, mounts and finish

We can often adapt moulds to provide custom variants (for example to make an animal face in a different direction). Other times we design and sculpt completely new items to meet specific client requests.

All products can be customised with different colours, finishes or mounting options. We recommend a 2Pac finish as essential for items used outdoors, and can provide guidance about options when you order.

## Explore thousands of products on our website

See our website for everything from animal and bird sculptures to themed props, playground items, rocks, dinosaurs, unicorns and giant mushrooms. We even have a life-size helicopter! These are all our original designs, not the cheap replicas found elsewhere.

## Pricing and delivery

How much does it cost to customise and ship a life-size elephant sculpture or two pirates and a mermaid? As there are many variables with such unique products, we will estimate costs when you make an enquiry. Our team looks forward to hearing from you!



# JUST A FEW OF OUR ORIGINAL SCULPTURES...



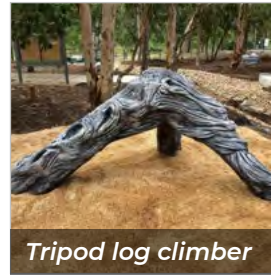
Saltwater croc



Great white shark



Pelican slide



Tripod log climber



Set of giraffes



Thorny devil lizard



Giant koala



Pelican on post



Giant grizzly bear



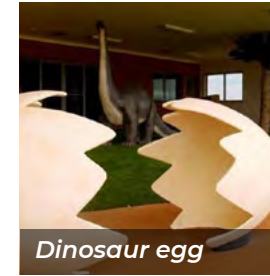
Polar bear & cub



Whale tail



Humpty Dumpty



Dinosaur egg



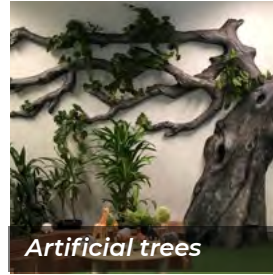
Redback spider



Zebra seat



Stegosaurus



Artificial trees



Artificial rocks



Custom murals



Turtle



Smartie seats



Tyrannosaurus Rex



Tasmanian Devil



Pirate Captain



Fossil digs



Giant tree frog



Christmas Santa



Giant kookaburra



# DISCOVER MORE!

CONTACT NATUREWORKS – WE CAN MAKE NATURAL MAGIC FOR YOU!

Natureworks is based in Brisbane, serving customers in Australia and around the world. To find out more about our products and custom design services, please see our website or get in touch with our team.

Contact Natureworks today to see how we can transform your project with custom design solutions and add a sprinkle of natural magic!



Visit our website to download catalogues:  
[natureworks.com.au](http://natureworks.com.au)

## FOLLOW US ON...



## CONTACT US

**Address** 732 Mt Glorious Rd, Highvale  
QLD 4520, Australia  
*(please call before visiting)*

**Email** [info@natureworks.com.au](mailto:info@natureworks.com.au)

**Telephone** +61 (0)7 3289 7555

**Website** [natureworks.com.au](http://natureworks.com.au)

+61 (0)7 3289 7555 [info@natureworks.com.au](mailto:info@natureworks.com.au) [natureworks.com.au](http://natureworks.com.au)

VISIT OUR **41**  **WEBSITE**



## Naturework commissions feedback

<https://natureworks.com.au/product-category/big-things/>

Natureworks have produced hundreds of Big Things

### Mossman cockatoo, QLD



From: Admin Admin <info@mossmanmotel.com.au>

Sent: Friday, 23 October 2020 6:31 AM

To: mcc.nrmo@bigpond.com

Subject: Re: giant cockatoo

Hello Rachel

We have owned the sculpture for 8 years with no maintenance costs other than a chlorine clean once per year. The sulphur crest is a bit faded but that is all.

### Wombat Thallon QLD



Phoned Leanne Brosnan of Thallon QLD Oct 2020 – she was very positive about the whole process and highly recommends Natureworks.

<https://www.goondiwindiargus.com.au/story/5001485/watch-out-gunsynd-theres-a-new-kid-on-the-block/>

Leanne's comments - Thallon was a dying town of 100 people. William the Wombat is a major tourist attraction (along with painted silos). 2m high. Planned 2015 by Progress Association, built 2017 – for tourist and education purposes. Its climbable and that's encouraged. Middle of town. Maintenance – small hairline cracks from heat expansion/contraction – Natureworks provided touch up kit, not thought to be an issue. Funding – various including FRRR who provided the leverage funding. Natureworks were happy to start works even without full funding amount reached.

### Luna Park Sydney



The iconic 9-meter wide (30 ft) smiling face, as well as its Art Deco towers, have presided over the main entrance for almost all of the park's existence. The idea was based on the large smiling faces at Luna Park, Melbourne, Australia, and Steeplechase Park in the United States. There have been eight distinct faces, installed in 1935, 1938, 1947, 1958, 1960, 1973, 1982, and 1995. The seventh face was donated to the Powerhouse Museum in May 1994.[7]: 125 **The eighth and current face was created by Australian sculpture company Natureworks. It was built in 1993 from heavy duty fiberglass and installed in 1995.**

Lunar Park was contacted February 2023 but no reply as yet. See Natureworks info attached on construction info.

## Big tree. Parafield Gardens, South Australia



(From Tim Aspinall) This is an email from a client from a primary school that we have just finished installing an artificial tree into their library. (photos attached)

*Tim, words honestly can not describe how absolutely blown away I am with what you have all created for us. It is absolutely exquisite and has exceeded anything I had dreamed of having created. The Reading tree is going to inspire so many beautiful memories and dreams for our students as they enjoy many great books in our library.*

*I can't thank you enough for bringing our vision to life. Please keep the progress shots coming if possible - the kids LOVE seeing how it all happens and comes together - even down to questions about 'how will it get here if it's built somewhere else' and 'are there trucks big enough to take a whole tree'. Children's thoughts are such a joy!*

Speak soon,

Deana

Deana Cuconits

Lead Teacher

Parafield Gardens Primary School

23 Shepherdson Road

Parafield Gardens 5107

Ph. (08) 8258 1816

# Natureworks



[www.natureworks.com.au](http://www.natureworks.com.au)

07 3289 7555

[info@natureworks.com.au](mailto:info@natureworks.com.au)



## ***Mission statement***

We pride ourselves in bringing life-like wonders of nature to our clients in the form of hand sculpted artworks and themed environments for memorable education, entertainment and delight.

### **Who We Are**

Natureworks is arguably Australia's leading design and construction company specializing in simulated natural and fantasy themed attractions.

Our reputation for lasting quality, reliable craftsmanship and exacting detail is the result of scores of projects across Australia and South-East Asia. In part, our reputation has come from attention to detail.

With over 40 years of combined knowledge and experience in natural and cultural history, the creativity, skills and technical expertise has enabled Natureworks to build displays that invite the public to wonder 'Is It Real or Is It Not?' By sparking the imagination of visitors and developing exhibits that are realistic, innovative, and above all entertaining, we are able to transport them on a journey they'll never forget.

Our work to date has included:

- Wildlife exhibits from the four corners of the earth, presented in an unforgettably life-like manner
- Fun shows for the young and light-hearted, included cartoon characters, animated shows or thrill rides
- Fully functional aquariums, displays for all themes, from mountain streams and tropical reefs to the depths of the world's oceans
- Special effects for a wide range of applications, including illustrating native culture and our amazing universe
- Prehistoric displays – presented with considerable historical accuracy – to bring the mysterious past to light

### **Corporate Profile**

Underpinning our focus on realism, caricature and surrealism is a desire to bring a rich clarity of expression in our art to a wide audience. What sets us apart is the belief that the complexity of the natural world and the richness of fantasy worlds are best celebrated through technical excellence and detail rather than the broad-brush strokes of abstraction.

With over 2000 moulds in our collection we provide a fascinating 3D library of wildlife and landscape objects d'art for building landscapes that are "out of this world".

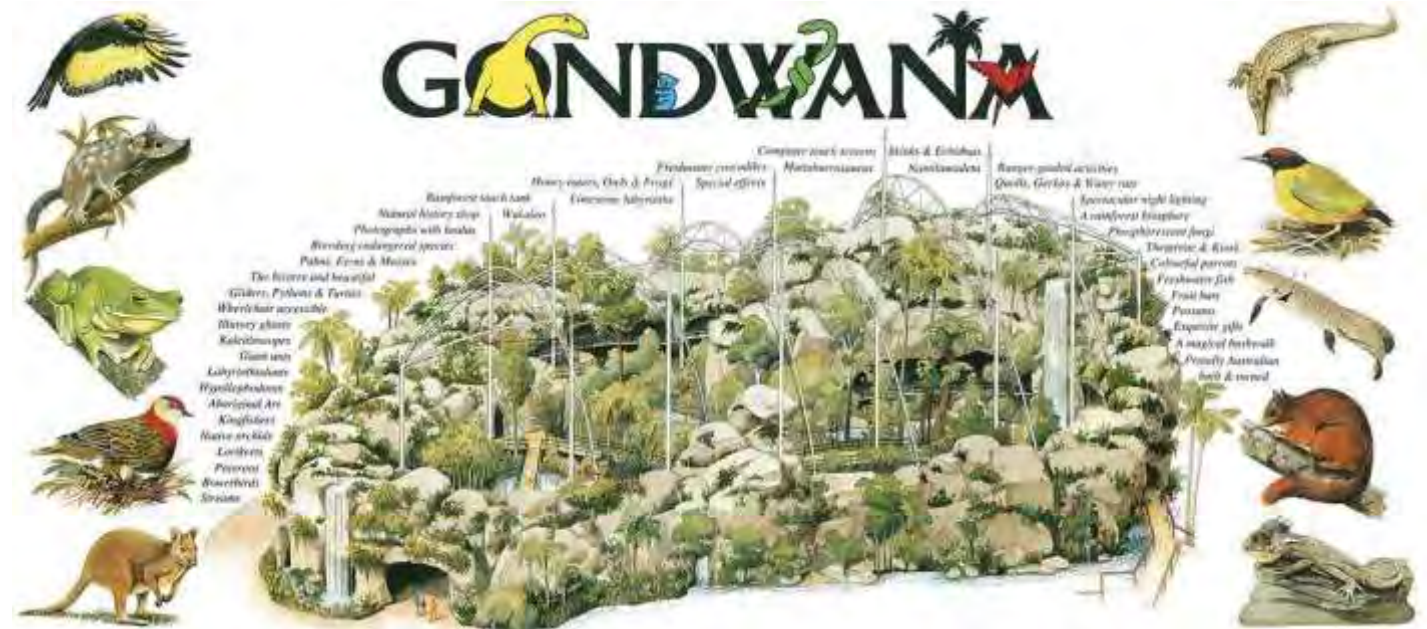
David, the founder and Imagineering Director is considered one of the leading consultants and pioneers of the themed entertainment industry. The Natureworks team includes industrial and graphic designers, model makers, mural artists, sculptors, naturalists, project managers, construction managers, fabricators and an array of specialist consultants are called upon when the need arises.



Gondwana Rainforest Sanctuary was built on the south bank of the Brisbane river in 1992 in a record 23 weeks. The project comprised of multiple rainforest enclosures and exhibits on a site area of approximately 3,000m. The design and construction cost was approximately AUD8m.

# COMPLETED PROJECTS

## GONDWANA RAINFOREST SANCTUARY – BRISBANE, AUSTRALIA



Radisson Hotel Cairns engaged Natureworks in 1988 to design and construct a 5 star hotel rainforest lobby for the value of AUD1.2m. The central tree was 16m with over 50 15m artificial palms and waterfalls.

## RADISSON HOTEL – CAIRNS, AUSTRALIA



Natureworks have Designed and Built attractions at several of the region's leading zoos and aquariums, including the Polar Adventure attraction at Hong Kong's Ocean Park, all exhibits at River Safari Singapore Zoo and numerous more at Taronga Zoo Sydney, Sea World, Gold Coast and Currumbin Wildlife Sanctuary, Gold Coast.

## CURRUMBIN WILDLIFE SANCTUARY - AUSTRALIA



## BANKSTOWN SPORTS CLUB – SYDNEY, AUSTRALIA





## TREE OF LIFE – SEOUL, KOREA

Natureworks has completed many elaborate recreations of trees and artificial rock for indoor and outdoor venues. Two of the most exquisite examples can be seen at Sopoong Shopping Mall in Seoul, Korea, with the 20m “Tree of Life” and the 17m tall strangler fig at Bankstown Sports Club in Sydney, Australia.



## UNDERSEA PUTT AND PLAY – REDCLIFFE QLD

Natureworks have designed and built many themed Mini Golfs for indoor and outdoor venues. Two of the most recent examples can be seen at Bluewater Square shopping Center in Redcliffe and Westfield shopping Center Coomera Gold Coast.



## PUTT IN THE PARK – WESTFIELD COOMERA



Natureworks can demonstrate the knowledge and experience that is required to deliver museum quality exhibits in all natural environments, ranging from saltwater marine environments to natural fresh water environments that must support a healthy habitat for animals.

## SHANGHAI OCEANARIUM – SHANGHAI, CHINA



## TARONGA ZOO – SYDNEY, AUSTRALIA



## SERVICES

Natureworks offers a unique and diverse range of services. We begin with concept development and design – developed in collaboration with our clients and their urban design professionals, or independently. For each project, we prepare construction documentation, shop drawings (and models where necessary) with detailed costings.

Through our highly skilled staff and decades of accumulated experience, we can provide any look required – from artificial coral reefs through to bronze-look statues, artificial trees, fires, lava and prehistoric exhibitions. We can also create natural habitats for any live or artificial animal display and can design and build fantasy structures for the entertainment industry, or faithfully recreate a historical scene.

Our commitment to quality means that our artificial rock and waterscapes are indistinguishable from natural features – enhancing any exhibit and visitors' experience.

Our skills include:

- Sculpture, moulding & casting
- Mural and fine art work
- Dioramas
- Travelling exhibits
- Steel fabrication
- Fibre glassing
- Concrete artificial rock work
- Structural and foaming urethane and polystyrene materials
- Model making

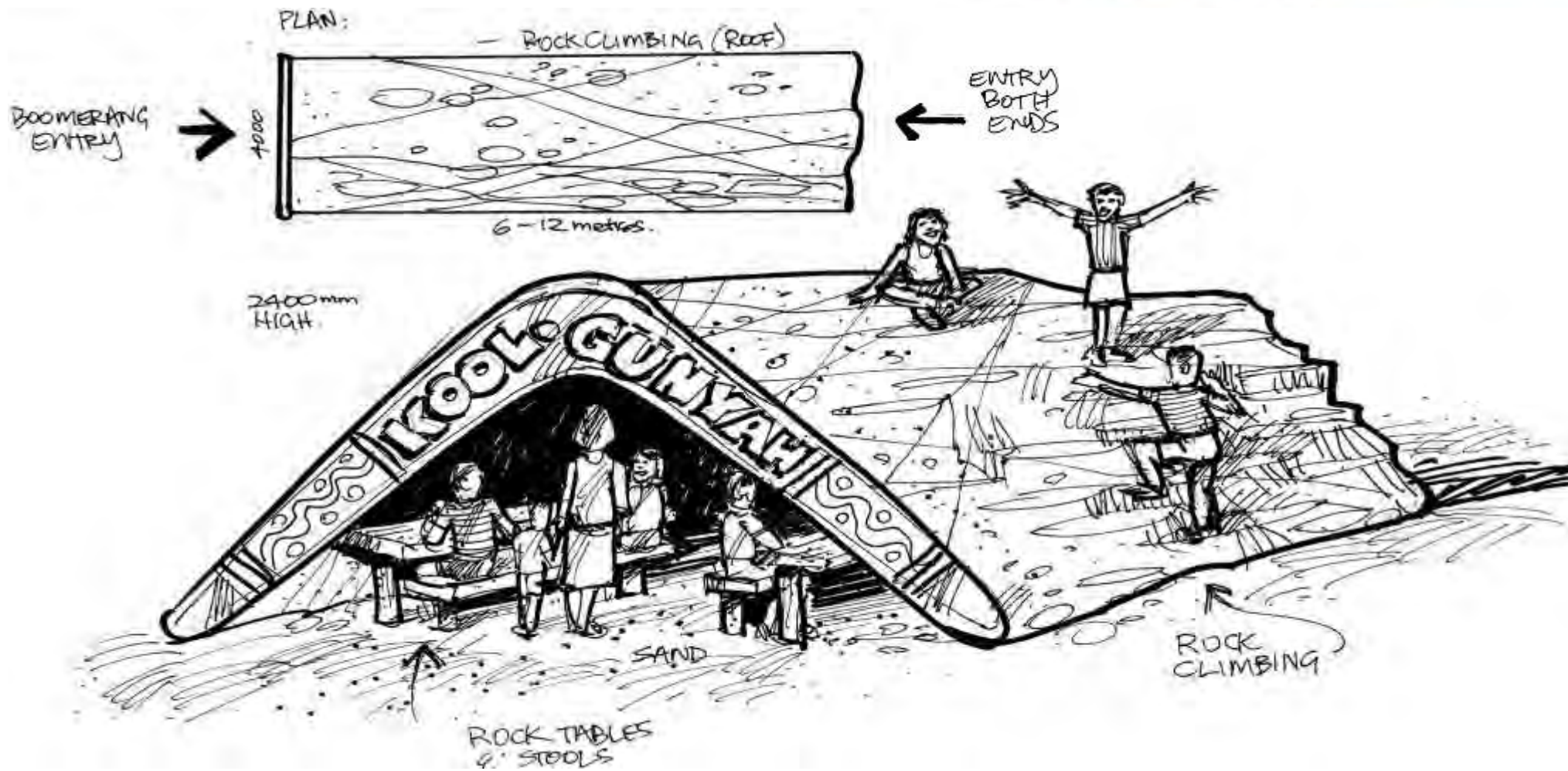
Using these skills, we can work with an unlimited range of mediums. Some common mediums include:

- Timber
- Concrete
- Metal
- Fibreglass
- Urethane
- All Paint Mediums

### ***From fabrication to fit-out***

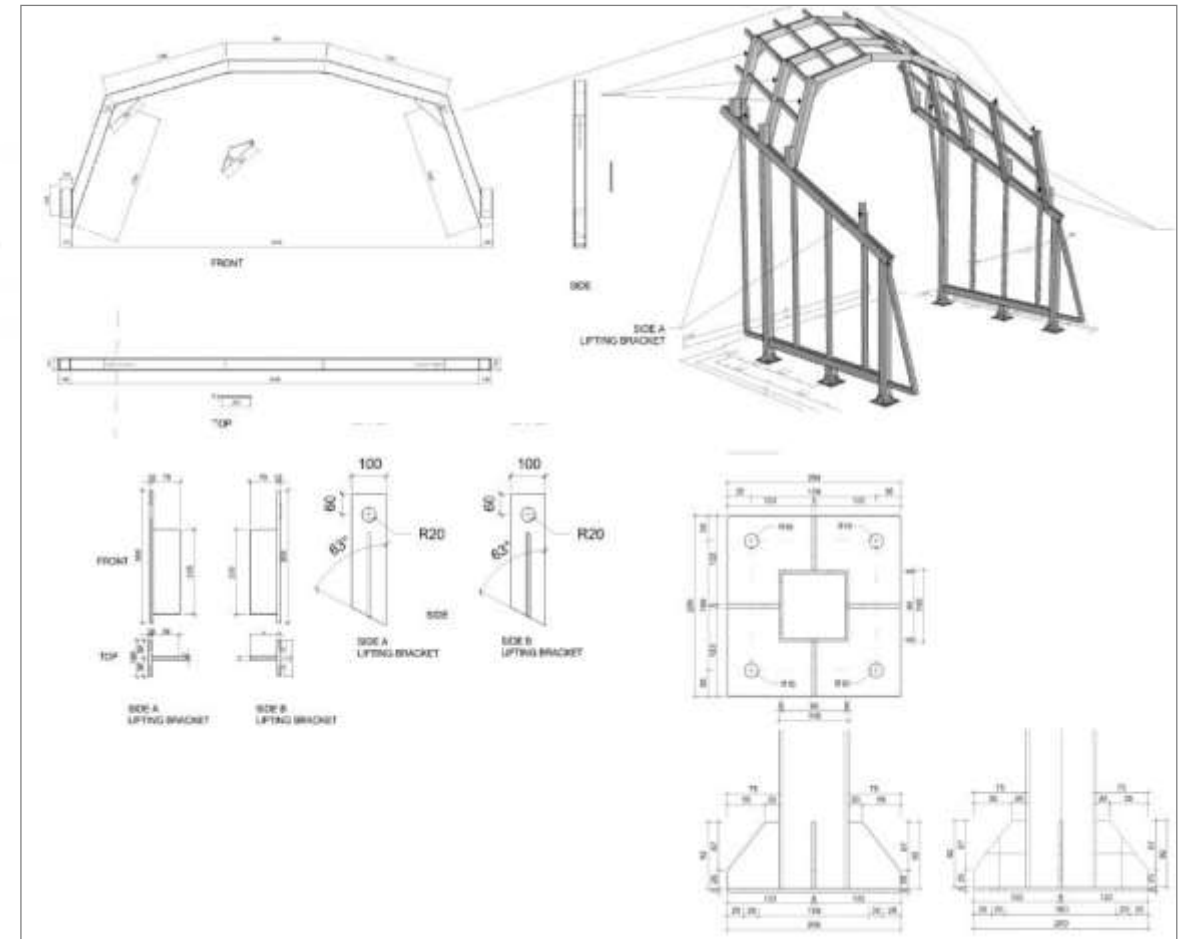
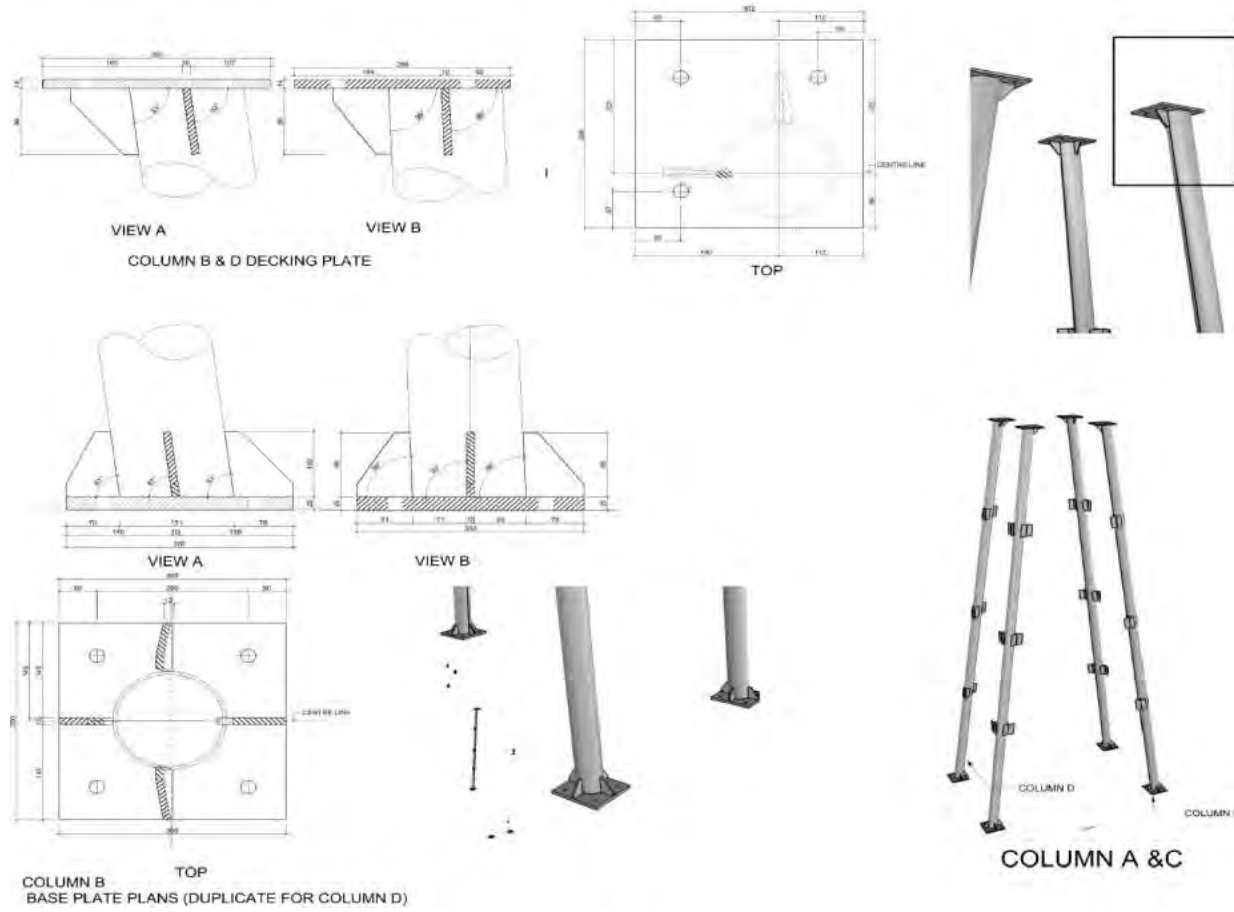
Natureworks offers a one-stop shop for display fabrication.

# CONCEPT DESIGN



# CONSTRUCTION DOCUMENTATION

Development of the approved schematic design into detailed design drawings, done in conjunction with the project Architect/ Engineers and the project design team including the various consultants.

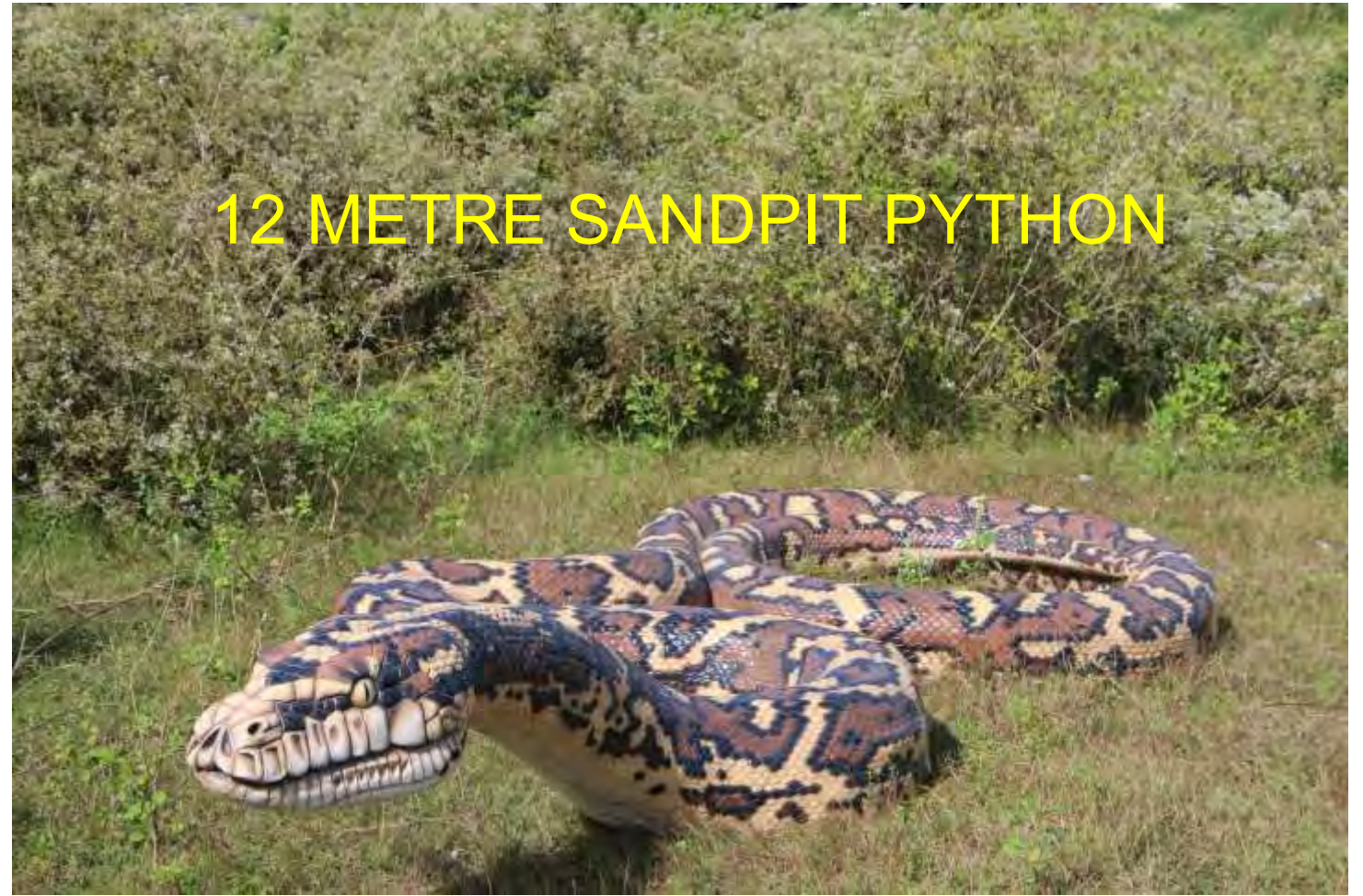


ANIMAL SCULPTURES









ARTIFICIAL ROCKWORK





## NATUREWORKS TEAM

**David Joffe**

**Imagineering Director, Natureworks Pty Ltd**

David Joffe was originally trained as a museum preparator at the Queensland Museum from 1970 to 1979. During this time his skills were finely honed-in the art of replicating elements of the natural world. He coordinated much of the display building for the exhibits for the new museum which opened in 1980. David left the museum in 1979 to pursue his dream of creating the first fabrication business offering museum techniques to the commercial world.

Since inception, David's business has been inundated with the strangest of requests and has subsequently amassed an unparalleled collection of natural history sculptures comprising Animal Art, Garden Art, Australiana Art, Works of Art and Quirks of Art. Combined with David's knowledge and expertise, this collection affords Natureworks the leading edge in the theming industry in Australia.

David's experience is drawn from the numerous projects he has created for zoos, aviaries, cultural centres, theme parks, botanical gardens, shopping malls, aquaria, playgrounds, mini golf and museums. Of enormous value to a development team during the early stage of a project is to know what to design, relative to cost effective fabrication and construction. The conceptualization design and practical specification of unusual themed structures and objects is not in the memory bank of many of today's architects and engineers. For David, after more than 44 years designing and specifying natural history related projects, this process is simply second nature.

David has become the "Ripley" of the Natural World and his collection of Natural Curiosities includes over two thousand animal, bird, reptile and frog castings, either "life cast" or sculptured, including logs, trees, roots, rocks, ponds, fungi, corals, invertebrates, termite mounds, water lilies, dinosaurs, giant crystals and fossils. These moulds provide a unique resource when the need arises to create beautiful natural habitats and environments with outstanding focal points of great natural beauty.

David is highly skilled in developing the visitor experience and knows how to combine entertainment with education to produce the "Edutainment" and the essential 'WOW!' factor. David is sought after as consultant to architects and engineers worldwide for his creative vision and for his knowledge of building the bizarre. He is a high-energy, creative thinker whose brain was nurtured by the natural world from his childhood and a lifetime lived in the subtropical rainforests of South East Queensland.

David can energize your project with dynamic, original thought and the grin factor! Don't be themed without him!



## Tim Aspinall

**Design and Projects Facilitator, Natureworks Pty Ltd - South Australia Office**

Tim has enjoyed a diverse career over 40 years working across many industries, that has ultimately led into Design and Construction as a General Manager, fulfilling the associated duties of Project Manager, Operations Manager and Production Manager. Tim holds a current QBCC Site Supervisors License and has a keen passion in hands on design and project development and enjoys ongoing close and successful collaborations with design teams and client associates. He has carried out design work for a broad range of commercial projects that fulfil the design briefs with cost effective, aesthetically pleasing and fit for purpose design solutions.

Tim brings a well experienced, comprehensive, diverse and highly skilled abilities in the commercial building, manufacturing and themed attraction industries. He has obtained in-depth knowledge of many varied and unusual building and manufacturing techniques and product development.

This often includes the design and incorporation of, fibreglass, urethane and concrete products, specialised industrial coating, electronics, mechanics, static and dynamic signage, digital sound, specialised lighting, animation, hydraulics, and plumbing. Tim also possesses highly artistic and creative flair with an exceptional eye for detail in producing exceedingly high-quality products and outcomes.

This has given him a sound and proactive ability to project manage efficiently and effectively in terms of highly successful Project delivery within challenging circumstances, with tight budgets and timeframes. This has been acknowledged by many clients in their feedback. Tim brings a continuing commitment to all future projects to work toward equally successful achievements. It has also been positively acknowledged by peers that his professional skills and attributes enable him to draw on, and utilize, a different approach from the conventional building mindset.

- **Bachelor of Industrial Design / Bachelor of Applied Science in Environmental Design**
- **Associate Diploma in Building and Construction**
- **QBCC License No. 1158198**
- **CPSIA Level 1 & 2 Operational Playground Inspector**



## Julie Margaglione

**General Manager, Natureworks Pty Ltd**

Julie's career over the last 40 years started in the banking and finance industry for 12 years progressing on a financial and administrative basis to a joint venture director role in polythene manufacturing and janitorial supply, warehousing and management. An avid interest in real-estate has progressed into the ongoing portfolio management of commercial and residential real estate developments. Known to have an attention to detail and the streamlining of processes, unbounding work ethic and energy. Works well under pressure and always has time to learn, listen and share to embrace innovative and creative ideas with a passion for the arts.

- **Cert II in finance and bookkeeping**
- **Full Real-estate license**



NATUREWORKS Pty Ltd  
732 Mt Glorious Road  
Highvale, (via Samford) 4520  
Queensland, Australia

TEL: (61) 7 3289 7555  
FAX: (61) 7 3289 7788  
Email: [info@natureworks.com.au](mailto:info@natureworks.com.au)  
Web Site: [www.natureworks.com.au](http://www.natureworks.com.au)  
ABN: 22 061 825